

Xatellite B Series



Xatellite B Industrial Grade Indoor CPE

- B1 edition: 4G
- B2 edition: 4G + 4G dual
- B5 edition: 5G
- B54 edition: 5G + 4G combo
- B1P edition: 4G & POE+ output
- B2P edition: 4G + 4G dual & POE+ output
- B5P edition: 5G & POE+ output
- B54P edition: 5G + 4G combo & POE+ output



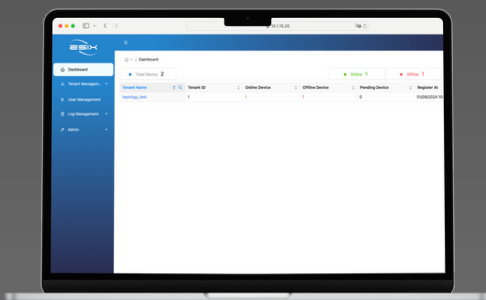
High speed of Ethernet ports and WiFi 6

Providing Gigabits data transmission capabilities. Enables WiFi6 dual-band frequencies of 2.4GHz and 5GHz. Transfer large amounts of data across your corporate network, improving work efficiency.

Across network Overlay pure L2 or L3 tunnel

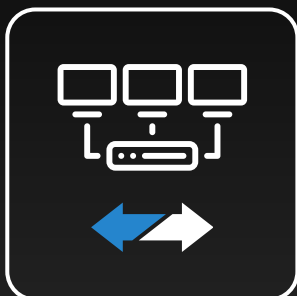
Pure L2 or L3 tunnels covered by the network have the advantages of improving efficiency.

SDM Central Management



It supports centralized device management with multi-tenant mode, allowing for efficient management of devices across multiple locations or branches.

SD-WAN Ready



Enhance your SD-WAN deployment with the power of Multi Ethernet WANs, Dual 4G, 5G&4G combo, and Wi-Fi WAN. You can leverage all available WAN connections to ensure uninterrupted connectivity and keep your business operations running smoothly.

Network Bonding, Failover

Bonds multiple networks together, including Multi-WAN capabilities, to create higher bandwidth. It seamlessly switches between connections within milliseconds for low latency and safe operation.



Use Cases



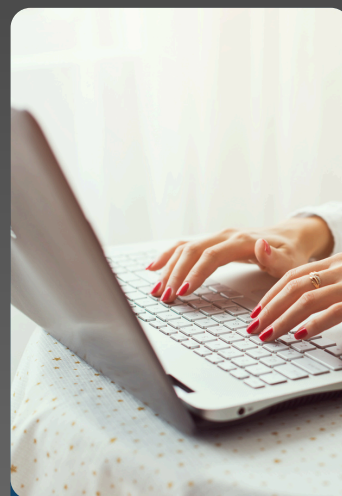
Carpark,
Charging Station



POS, Kiosk



IOT,
Remote Surveillance



Home Office,
Mobile Office

XATELLITE B SERIES SPECIFICATION

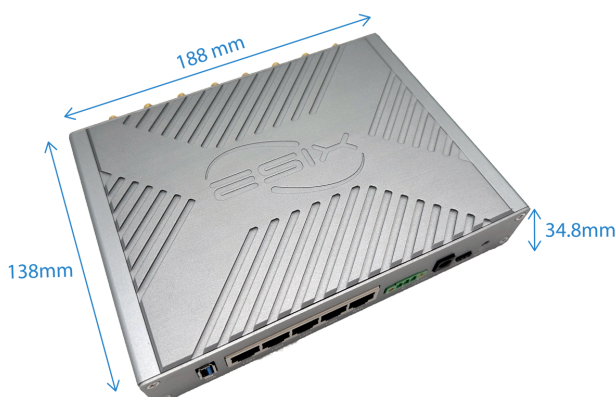


Xatellite	Series	Xatellite B							
	Edition	B1	B1P	B2	B2P	B5	B5P	B54	B54P
Summary	Mobile	4G		4G + 4G		5G		5G + 4G	
	Wi-Fi	Wi-Fi 6		Wi-Fi 6		Wi-Fi 6		Wi-Fi 6	
	Ethernet Ports (LAN + WAN)	5		5		5		5	
	POE+ output	NIL	OK	NIL	OK	NIL	OK	NIL	OK
	Bandwidth bounding & redundancy	4G + fixed line		4G + 4G + fixed line		5G + fixed line		5G + 4G + fixed line	
Hardware	CPU	64-bit Dual-Core ARM							
	NPU	Independent network processing unit							
	Form Factor	Aluminum alloy case							
	Mounting Option	75 × 75 mm VESA mount							
Cellula Network	Communication Standard	LTE, LTE-A, LTE-A Pro, 700 to 2600 MHz				3GPP Release 16 NSA/SA operation Sub-6 GHz			
	Application Network	LTE-FDD LTE-TDD WCDMA				5G NR SA 5G NR NSA LTE-FDD LTE-TDD WCDMA			
	5G NR Transmission Rate	NIL				5G SA Sub-6: - Downstream 2.4Gbps - Upstream 900 Mbps 5G NSA Sub-6: - Downstream 3.4 Gbps - Upstream 500 Mbps			
	4G LTE Transmission Rate	4G LTE CAT-6 Downstream 300 Mbps Upstream 50 Mbps				CAT-19 Downstream 1.0 Gbps CAT-18 Upstream 200 Mbps			
	Network Frequency Band: 5G: Frequency Locking available	NIL				N1/N2/N3/N5/N7/N8/N12/N13/N14/N18/N20/ N25/N26/N28/N29/N30/N38/N40/N41/N48/ N66/N70/N71/N75/N76/N77/N78/N79			
	Network Frequency Band: 4G: Frequency Locking available	B1/B2/B3/B4/B5/B7/B8/B12/B13/B14/B17/B18/ B19/B20/B25/B26/B28/B30/B34/B38/B39/ B40/B41/B42/B43/B66/B71				B1/B2/B3/B4/B5/B7/B8/B12/B13/B14/B17/B18/ B19/B20/B25/B26/B28/B29/B30/B32/B34/ B38/B40/B41/B42/B43/B46/B48/B66/B71			
	Antenna Connectors (SMA)	2 × 5G/4G antennas		4 × 5G/4G antennas		4 × 5G/4G antennas		6 × 5G/4G antennas	
Wi-Fi	Wi-Fi Standard	Wi-Fi 6; 802.11 a/b/g/n/ac/ax							
	Operating Frequency	2412MHz ~ 2462MHz & 5180MHz ~ 5825MHz							
	Transmission Rate	2×2 MU-MIMO WiFi 2.4GHz radio: Up to 574Mbps physical data rate 2×2 MU-MIMO WiFi 5GHz radio: Up to 1210Mbps physical data rate							
	Modulation Technology	802.11 b: DSSS (DBPSK, DQPSK, CCK) 802.11 a/g/n: OFDM (BPSK, QPSK, 16-QAM , 64-QAM) 802.11 ac: OFDM (BPSK, QPSK, 16-QAM , 64-QAM, 256-QAM) 802.11 ax: OFDM (BPSK, QPSK, 16-QAM , 64-QAM, 256-QAM, 1024-QAM)							
	Antenna Connectors	2 × Dual bands Wi-Fi antennas (SMA)							
	Wi-Fi Connections:	Max 128 × Wi-Fi connections (concurrently)							
I/O	LAN/WAN Ports	1 × GE RJ45 WAN port/ 4 × GE RJ45 LAN ports (One of RJ45 LAN ports is POE+ input)							
	SIM Options	2 × Nano Sim slots (Single Pass, Single Standby)		2 × Nano Sim slots (Double Pass)		2 × Nano Sim slots (Single Pass, Single Standby)		2 × Nano Sim slots (Double Pass)	
	USB Ports	1 × USB 3.0 port (ModBus, RS232/TTY)							
	Reset	1 × Reset / Factory Restore Button							

XATELLITE B SPECIFICATION

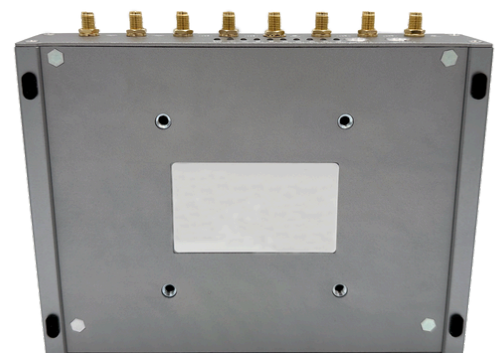


Xatellite	Series	Xatellite B							
	Edition	B1	B2	B5	B54	B1P	B2P	B5P	B54P
Operation Environment	Temperature	-20°C ~ 70°C							
	Humidity	5% ~ 95% non-condensing							
	Ingress Protection Rating	IP41							
Storage Environment	Temperature	-40°C ~ 85°C							
Power	Input	(1) Standard DC-044A 5.5×2.1mm DC Jack input 24 ~ 56V DC (2) 3 pin industrial phoenix power plug 24 ~ 56V DC (3) IEEE 802.3 AT PoE+ Available adaptors - 24V/2A adaptor (default) - POE+ injector (optional)				(1) Standard DC-044A 5.5×2.1mm DC Jack input 24 ~ 56V DC (2) 3-pin industrial phoenix power plug 24 ~ 56V DC Available adaptors (OPTIONAL) - 24V/2A adaptor, no PoE output - 48V/144W adaptor, 138W PoE+ output - 48V/300W, IP65 adaptor, 150W PoE+ output			
	Consumption	11.35W (Nominal), 48W (Max)				11.35W (Nominal), 48W (Max) (No POE out)			
Functions	Routing & Switching	Support OSPFv2, Policy-Based Routing, NAT, PAT, BFD, Multi-WAN, 802.1Q VLAN, VxLAN, STP, RSTP, MSTP, QinQ over IP, MQTT Broker, etc.							
	APN	Support Frequency Locking, Network Slicing, Bridge Mode, 5G LAN							
	Security	Support Sim PIN protection, Firewall, Mac Address Access Control, IP Address Access Control, MACsec, Wi-Fi Encryption authentication							
	VPN	Support IPsec VPN, GRE, WireGuard, EVPN-VXLAN, IPfiber(L2 overlay)							
	GNSS	Support GPS, Beidou, Galileo(Optional)							
	Administrator Maintenance	Support SNMP, SSH, WebUI, SDM (Cloud Central Management)							
Performance	Router Throughput (Max)	2 Gbps							
	IPSec Throughput (Max)	AES-128-SHA1: 70 Mbps AES-256-SHA256: 60 Mbps							
	IPfiber Throughput (Max)	Standard Encryption (AES-128-GCM-SHA256): 250 Mbps Enhanced Encryption (AES-256-GCM-SHA384): 180 Mbps							
	MACsec Throughput (Max)	GCM-AES-128: 72 Mbps GCM-AES-256: 65 Mbps							
	*Note: Router/IPsec/MACsec/IPfiber Throughput is based on MTU 1500 bytes. Actual performance can vary across different networking environments. Figures apply to the latest hardware revision. The throughput result is tested with DHCP/Static IP.								



Dimension:
188 × 138 × 34.8mm

Weight (body):
≈ 930g



There might be colour aberration between picture and each existence

Suitable for 75 × 75 mm VESA mount kit

ORDERING INFORMATION



SKU	Packing List
X3510-40-112-48W-D (B1: single 4G edition)	SKU: X3510-40-112-48W-D - Xatellite B router body - Single 4G Module inside - SMA Wi-Fi Antenna (EA-S-W) × 2 - SMA 5G/4G/GNSS Antenna (EA-S-5) × 2 - AC/DC Adapter, 24V DC/2A - DC Jack (EP-D-24D) × 1 *PoE+ Injector is not included.
X3510-44-112-48W-D (B2: dual 4G edition)	SKU: X3510-44-112-48W-D - Xatellite B router body - Dual 4G Module inside - SMA Wi-Fi Antenna (EA-S-W) × 2 - SMA 5G/4G/GNSS Antenna (EA-S-5) × 4 - AC/DC Adapter, 24V DC/2A - DC Jack (EP-D-24D) × 1 *PoE+ Injector is not included.
X3510-50-112-48W-D (B5: single 5G edition)	SKU: X3510-50-112-48W-D - Xatellite B router body - Single 5G Module inside - SMA Wi-Fi Antenna (EA-S-W) × 2 - SMA 5G/4G/GNSS Antenna (EA-S-5) × 4 - AC/DC Adapter, 24V DC/2A - DC Jack (EP-D-24D) × 1 *PoE+ Injector is not included.
X3510-54-112-48W-D (B54: 5G + 4G combo edition)	SKU: X3510-54-112-48W-D - Xatellite B router body - Single 5G Module & single 4G Module inside - SMA Wi-Fi Antenna (EA-S-W) × 2 - SMA 5G/4G/GNSS Antenna (EA-S-5) × 6 - AC/DC Adapter, 24V DC/2A - DC Jack (EP-D-24D) × 1 *PoE+ Injector is not included.
X3510-40-P12-144W-D (B1P: single 4G & POE+ output edition)	SKU: X3510-40-P12-144W-D - Xatellite B router body - Buildin PoE+ out board - Single 4G Module inside - Phoenix male terminal × 1 - SMA Wi-Fi Antenna (EA-S-W) × 2 - SMA 5G/4G/GNSS Antenna (EA-S-5) × 2 - AC/DC Adapter, 48V DC/Max 144W DC Jack (EP-D-144D) × 1
X3510-44-P12-144W-D (B2P: dual 4G & POE+ output edition)	SKU: X3510-44-P12-144W-D - Xatellite B router body - Buildin PoE+ out board - Dual 4G Module inside - Phoenix male terminal × 1 - SMA Wi-Fi Antenna (EA-S-W) × 2 - SMA 5G/4G/GNSS Antenna (EA-S-5) × 4 - AC/DC Adapter, 48V DC/Max 144W DC Jack (EP-D-144D) × 1
X3510-50-P12-144W-D (B5P: single 5G & POE+ output edition)	SKU: X3510-50-P12-144W-D - Xatellite B router body - Buildin PoE+ out board - Single 5G Module inside - Phoenix male terminal × 1 - SMA Wi-Fi Antenna (EA-S-W) × 2 - SMA 5G/4G/GNSS Antenna (EA-S-5) × 4 - AC/DC Adapter, 48V DC/Max 144W DC Jack (EP-D-144D) × 1
X3510-54-P12-144W-D (B54P: 5G + 4G combo & POE+ output edition)	SKU: X3510-54-P12-144W-D - Xatellite B router body - Buildin PoE+ out board - Single 5G Module & single 4G Module inside - Phoenix male terminal × 1 - SMA Wi-Fi Antenna (EA-S-W) × 2 - SMA 5G/4G/GNSS Antenna (EA-S-5) × 6 - AC/DC Adapter, 48V DC/Max 144W (EP-D-144D) DC Jack (EP-D-144D) × 1

ORDERING INFORMATION

Accessories for B1, B2, B5, B54	
EP-D-24D	AC/DC Adapter, 24V DC/2A - DC Jack
EP-D-24P	AC/DC Adapter, 24V DC/2A - Phoenix block
EP-P-30R	PoE+ Injector 30W
EA-4M-2	External Waterproof 5G Mushroom Antenna (2 meters)
EA-4M-3	External Waterproof 5G Mushroom Antenna (3 meters)
EA-S-W	SMA Wi-Fi Antenna
EA-S-5	SMA 5G/4G/GNSS Antenna
EI-V75	VESA 75 × 75 mm Mount Kit
EO-UTT	USB to TTL (Xatellite console cable)

Accessories for B1P, B2P, B5P, B54P	
EP-D-144P	AC/DC Adapter, 48V DC/Max 144W - Phoenix block
EP-D-144D	AC/DC Adapter, 48V DC/Max 144W - DC Jack
EA-4M-2	External Waterproof 5G Mushroom Antenna (2 meters)
EA-4M-3	External Waterproof 5G Mushroom Antenna (3 meters)
EA-S-W	SMA Wi-Fi Antenna
EA-S-5	SMA 5G/4G/GNSS Antenna
EI-V75	VESA 75 × 75 mm Mount Kit
EW-M12-S	M12-SFP Waterproof Connector
EO-UTT	USB to TTL (Xatellite console cable)
EW-M12-R	M12-RJ45 Waterproof Cords for Ethernet Connection (1m) (include dual side waterproof connector × 1)

*Any special requirements, please contact to sales representative.

STANDARD HARDWARE/SOFTWARE WARRANTY POLICY

eSIX warrants solely to the original end-user purchaser ("Purchaser") that hardware ("Hardware") purchased from eSIX or our Authorized Partners will be free from defects in materials and workmanship when used within the limits set forth in the documentation (data sheet and user manual) for a period of twelve (12) months, starting from the time of shipment of the Hardware, or the date the Hardware was purchased according to sales registration, whichever is later. (If a 36-month warranty is required, please contact the sales representative.)

This limited warranty is non-transferable and extends only to the original end-user purchaser who acquired the Hardware from an Authorized Partner who has the right to sell in the end-user's territory. eSIX explicitly disclaims any warranty obligations for Hardware that is sold outside of the assigned territory of an Authorized Partner. Your exclusive remedy and eSIX' entire liability under this limited warranty will be for eSIX, at its option, to (a) repair the Hardware with new or refurbished parts, or (b) replace the Hardware with a reasonably available equivalent new or refurbished eSIX Hardware. Any repaired or replacement Hardware will be warranted for the remainder of the original Warranty Period or thirty (30) days, whichever is longer. All Hardware and parts that are replaced become the property of eSIX.

EXCLUSION AND LIMITATIONS

This limited warranty does not apply if: (a) the Hardware assembly seal has been removed or damaged, (b) the Hardware has been altered or modified, except by eSIX, (c) the Hardware damage was caused by use with non eSIX Hardware, (d) the Hardware has not been installed, operated, repaired, or maintained in accordance with instructions supplied by eSIX, (e) the Hardware has been subjected to abnormal physical or electrical stress, abuse, misuse, negligence, or accident, (f) the serial number on the Hardware has been altered, defaced, or removed, (g) the Hardware damage was caused by lightning, power surges or wrong voltage usage, or (h) the Hardware is supplied or licensed for beta, evaluation, promotional, testing or demonstration purposes for which eSIX does not charge a purchase price or fee.

ALL SOFTWARE PROVIDED BY ESIX ("SOFTWARE") WITH OR WITHOUT THE HARDWARE, WHETHER FACTORY LOADED ON THE HARDWARE, CONTAINED ON MEDIA ACCOMPANYING THE HARDWARE OR DOWNLOADED FROM OUR WEBSITE, IS PROVIDED "AS IS" WITHOUT WARRANTY OF ANY KIND.

Without limiting the foregoing, eSIX does not warrant that the operation of the Hardware or Software will be uninterrupted or error free. Also, due to the continual development of new techniques for intruding upon and attacking networks, eSIX does not warrant that the Hardware, Software or any equipment, system or network on which the Hardware or Software is used will be free of vulnerability to intrusion or attack. The Hardware and Software may include or be bundled with third party software or service offerings. This limited warranty shall not apply to such third party software or service offerings. This limited warranty does not guarantee any continued availability of a third party's service for which this Hardware's or Software's use or operation may require.