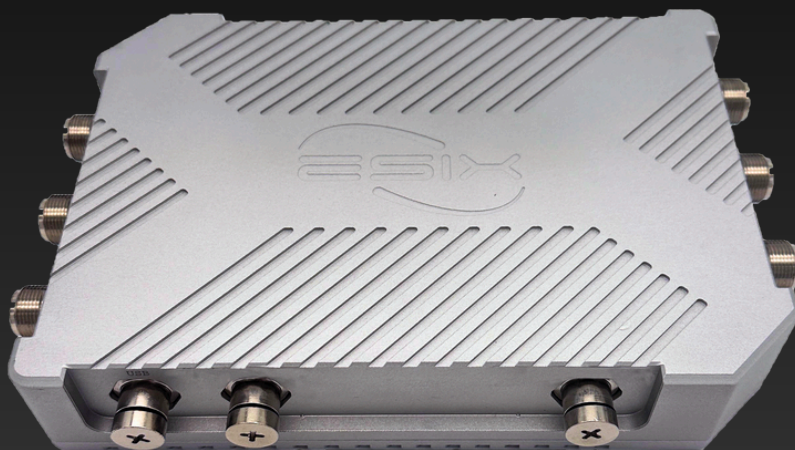


# Xatellite+

IP67 Industrial Grade Outdoor 5G CPE



## BGP4+ Available

With the powerful Quad-Core ARM V8 CPU and Dedicated Network Processing Unit Acceleration in place, BGP4+ is now at your disposal.

## Across network Overlay pure L2 or L3 tunnel

Pure L2 or L3 tunnels covered by the network have the advantages of improving efficiency.

## Aviation Grade M12 POE in

It ensures reliable power delivery and connectivity in harsh conditions, and enables outdoor and industrial settings, providing a robust networking needs in challenging environments.

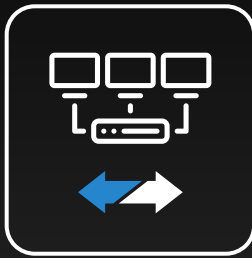


## Aluminum Alloy Cover and IP67 Waterproof

Used in industrial settings within harsher environments, providing durability and protection.



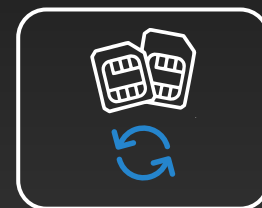
## SD-WAN Ready



Enhance your SD-WAN deployment with the power of Multi Ethernet WANs, 5G/LTE, and Wi-Fi WAN. You can leverage all available WAN connections to ensure uninterrupted connectivity and keep your business operations running smoothly.

## Network Bonding, Failover

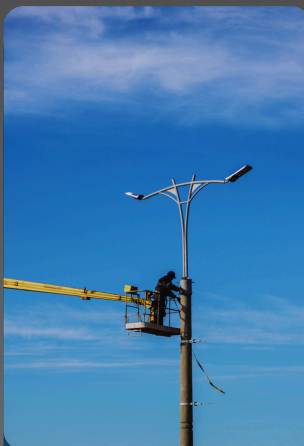
Bonds multiple networks together to create higher bandwidth and switches between connections within milliseconds for low latency and safe operation.



## SDM Central Management

It offers centralized device management and multi-tenant mode, allowing for efficient management of devices across multiple locations or branches.

## Use Cases



Smart Lamp Pole



Traffic Light,  
Outdoor surveillance



Smart ports Crane  
control, monitoring,  
outdoor AGV



Maritime boat  
management



# WIRELESS SPECIFICATION



## CELLULAR NETWORK

**Communication Standard:** 4G LTE Transmission Rate:  
3GPP Release 16 NSA/SA  
operation Sub-6 GHz

**Applicable Network :**  
5G NR SA, 5G NR NSA  
LTE-FDD, LTE-TDD, WCDMA

**5G NR Transmission Rate:**  
5G SA Sub-6:  
• Downstream 2.4Gbps  
• Upstream 900 Mbps  
5G NSA Sub-6:  
• Downstream 3.4 Gbps  
• Upstream 550 Mbps

CAT-19 Downstream 1.6 Gbps  
CAT-18 Upstream 200 Mbps  
**Network Frequency Band:**  
5G: Frequency Locking available  
N1/N2/N3/N5/N7/N8/N12/N13/N14/  
N18/N20/N25/N26/N28/N29/N30/  
N38/N40/N41/N48/N66/N70/N71/  
N75/N76/N77/N78/N79  
4G: Frequency Locking available  
B1/B2/B3/B4/B5/B7/B8/B12/B13/  
B14/B17/B18/B19/B20/B25/B26/B28/  
B29/B30/B32/B34/B38/B39/B40/  
B41/B42/B43/B46/B48/B66/B71  
**Antenna:**  
4 × 5G antennas (N-Type)

## Wi-Fi

**Wi-Fi Standard:**  
Wi-Fi 6  
802.11 a/b/g/n/ac/ax

**Transmission Rate:**  
2×2 MU-MIMO WiFi 2.4GHz radio  
Up to 574Mbps physical data rate  
2×2 MU-MIMO WiFi 5GHz radio  
Up to 1210Mbps physical data rate

**Modulation Technology:**  
802.11 b: DSSS (DBPSK, DQPSK, CCK)  
802.11 a/g/n: OFDM (BPSK, QPSK, 16-QAM , 64-QAM)  
802.11 ac: OFDM (BPSK, QPSK, 16-QAM , 64-QAM, 256-QAM)  
802.11 ax: OFDM (BPSK, QPSK, 16-QAM , 64-QAM, 256-QAM, 1024-QAM)

**Operating Frequency:**  
2412MHz ~ 2462MHz  
5180MHz ~ 5825MHz

**Wi-Fi Connections:**  
Max 512 × Wi-Fi connections  
(concurrently)

**Antenna:**  
2 × Dual bands Wi-Fi antennas  
(N-Type)

# TECHNICAL SPECIFICATION

**Hardware** **CPU:** 64-bit Quad-Core ARM v8  
**NPU:** Twelve-Threaded network processing unit  
**Form Factor:** Aluminum alloy waterproof case  
**Mounting Option:** 75 × 75 mm VESA mount  
**I/O:**  
2 × GE M12 Ethernet ports  
(With 2 × RJ45 adapted cables, one is POE+ input)  
1 × Micro SD Slot  
2 × Nano Sim slots (Single Pass, Single Standby)  
1 × M12 to USB 2.0 (ModBus, RS232/TTY)  
1 × Reset / Factory Restore Button

**Functions** **Network Features:**  
Support RIPv1, RIPv2, RIPng, OSPFv2, OSPFv3,  
BGP-4, BGP-4+, Policy-based Routing, NAT, PAT,  
BFD, MPLS, Multi-WAN, IPv6/IPv4 dual stack, SRv6,  
802.1Q VLAN, VxLAN, STP, RSTP, MSTP, QinQ over  
IP, MQTT Broker, etc.  
**Security:**  
Support SIM PIN protection, Firewall, Mac  
address access control, IP address access  
control, MACsec, Wi-Fi Encryption authentication  
**VPN:**  
Support IPsec VPN, DMVPN, GRE, WireGuard,  
EVPN-VXLAN, IPfiber(L2 overlay)  
**GNSS:**  
Support GPS, Beidou, Galileo(Optional)  
**Administrator maintenance:**  
SSH, WebUI, SDM (Remote WebUI/Console access)  
**Cloud Central Management:** Yes

**Performance** **Routing throughput (Max) :** 4Gbps  
**IPSecVPN throughput (Max) :**  
AES-128-SHA1: 420 Mbps  
AES-256-SHA256: 380 Mbps  
**IPfiber throughput (Max) :**  
Standard Encryption (AES-128-GCM-SHA256): 640 Mbps  
Enhanced Encryption (AES-256-GCM-SHA384): 440 Mbps  
**MACsec throughput (Max) :**  
GCM-AES-128: 730 Mbps  
GCM-AES-256: 710 Mbps

**Operating** **Temperature:**  
-35°C ~ 75°C  
-40°C ~ 85°C (Extended)

**Humidity:**  
5% ~ 100%  
non-condensing

**Storage** **Temperature:**  
-40°C ~ 85°C

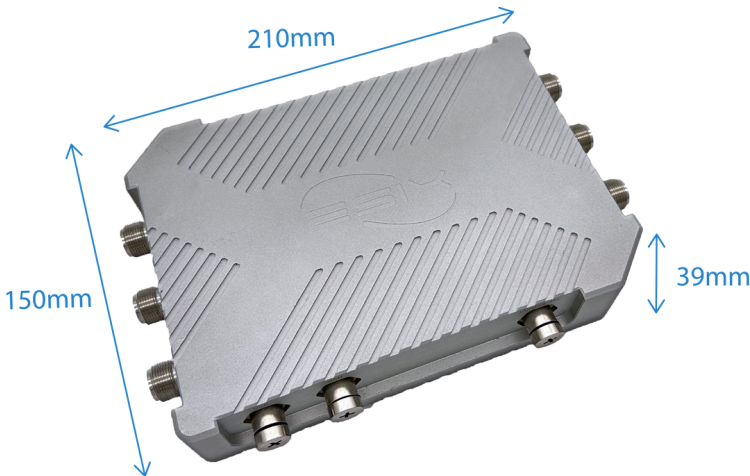
**Ingress Protection Rating** IP67

**Power input** M12 IEEE 802.3 AT PoE+  
Available adaptors  
- None (default)  
- POE+ injector (optional)

**Power Consumption** 8.5W: WiFi6 Off, 5G module On  
(no data flow)  
16.5W: WiFi6 On, 5G module On  
(iperf3 via WiFi6 & 5G Modem)

**Weight (body):** ≈ 1380g

**Dimension** 210 × 150 × 39mm



There might be colour aberration between picture and each existence

## ORDERING INFORMATION

SKU	Packing List
X5215-50-100 (Reference: Xatellite+)	SKU: X5215-50-100 - Xatellite+ router body - Single 5G modem inside - M12-RJ45 Waterproof Cords (EW-M12-R) (1 meter) × 1 (Total capacity 2) - N-Type Fiberglass Waterproof Wi-Fi Antenna (EA-N-W) × 2 - N-Type Fiberglass 5G Waterproof Antenna (EA-N-4) × 4 - M12 Waterproof Cap × 3 *PoE+ Injector (EP-P-30R) is not included. *M12-Female USB Waterproof Cord (EW-M12-U) is not included. *Lightning Protection Connector (EA-N-FL) is not included.
Accessories	
EP-P-30R	PoE+ Injector 30W
EA-N-W	N-Type Fiberglass Waterproof Wi-Fi Antenna
EA-N-4	N-Type Fiberglass 5G Waterproof Antenna
EA-N-FL	N-Type Lightning Protection Connector (1 connector for 1 antenna)
EW-M12-R	M12-RJ45 Waterproof Cords for Ethernet Connection (1 meter)
EW-M12-U	M12-Female USB Waterproof Cord (1 meter)
EW-N-D	N-Type Fiberglass Waterproof Cap
EW-M-D	M12 Waterproof Cap
EI-V75	VESA 75 × 75 mm Mount Kit

\*Any special requirements, please contact to sales representative.

## **STANDARD HARDWARE/SOFTWARE WARRANTY POLICY**

eSIX warrants solely to the original end-user purchaser ("Purchaser") that hardware ("Hardware") purchased from eSIX or our Authorized Partners will be free from defects in materials and workmanship when used within the limits set forth in the documentation (data sheet and user manual) for a period of twelve (12) months, starting from the time of shipment of the Hardware, or the date the Hardware was purchased according to sales registration, whichever is later. (If a 36-month warranty is required, please contact the sales representative.)

This limited warranty is non-transferable and extends only to the original end-user purchaser who acquired the Hardware from an Authorized Partner who has the right to sell in the end-user's territory. eSIX explicitly disclaims any warranty obligations for Hardware that is sold outside of the assigned territory of an Authorized Partner. Your exclusive remedy and eSIX' entire liability under this limited warranty will be for eSIX, at its option, to (a) repair the Hardware with new or refurbished parts, or (b) replace the Hardware with a reasonably available equivalent new or refurbished eSIX Hardware. Any repaired or replacement Hardware will be warranted for the remainder of the original Warranty Period or thirty (30) days, whichever is longer. All Hardware and parts that are replaced become the property of eSIX.

## **EXCLUSION AND LIMITATIONS**

This limited warranty does not apply if: (a) the Hardware assembly seal has been removed or damaged, (b) the Hardware has been altered or modified, except by eSIX, (c) the Hardware damage was caused by use with non eSIX Hardware, (d) the Hardware has not been installed, operated, repaired, or maintained in accordance with instructions supplied by eSIX, (e) the Hardware has been subjected to abnormal physical or electrical stress, abuse, misuse, negligence, or accident, (f) the serial number on the Hardware has been altered, defaced, or removed, (g) the Hardware damage was caused by lightning, power surges or wrong voltage usage, or (h) the Hardware is supplied or licensed for beta, evaluation, promotional, testing or demonstration purposes for which eSIX does not charge a purchase price or fee.

ALL SOFTWARE PROVIDED BY ESIX ("SOFTWARE") WITH OR WITHOUT THE HARDWARE, WHETHER FACTORY LOADED ON THE HARDWARE, CONTAINED ON MEDIA ACCOMPANYING THE HARDWARE OR DOWNLOADED FROM OUR WEBSITE, IS PROVIDED "AS IS" WITHOUT WARRANTY OF ANY KIND.

Without limiting the foregoing, eSIX does not warrant that the operation of the Hardware or Software will be uninterrupted or error free. Also, due to the continual development of new techniques for intruding upon and attacking networks, eSIX does not warrant that the Hardware, Software or any equipment, system or network on which the Hardware or Software is used will be free of vulnerability to intrusion or attack. The Hardware and Software may include or be bundled with third party software or service offerings. This limited warranty shall not apply to such third party software or service offerings. This limited warranty does not guarantee any continued availability of a third party's service for which this Hardware's or Software's use or operation may require.