

Xatellite MAX series

Industrial Grade indoor POE+ output Dual 5G CPE



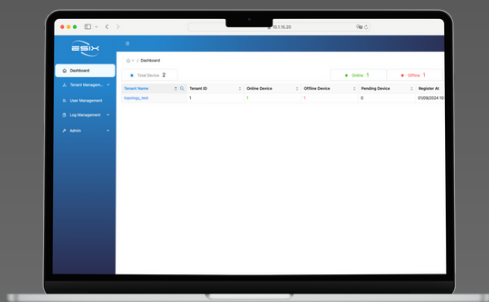
BGP4+ Available

With the powerful Quad-Core ARM V8 CPU and Dedicated Network Processing Unit Acceleration in place, BGP4+ is now at your disposal.

Aluminum Alloy Cover with POE+ output

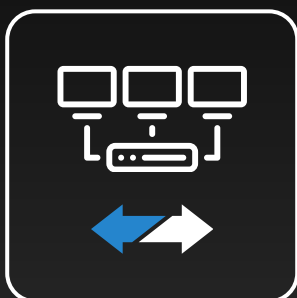
Used in industrial settings within various complex indoor industrial environments, with its 5 × PoE+ power output ports, it delivers ample power and network connectivity to end devices.

SDM Central Management



It supports centralized device management with multi-tenant mode, allowing for efficient management of devices across multiple locations or branches.

SD-WAN Ready



Enhance your SD-WAN deployment with the power of Multi Ethernet WANs. You can leverage all available WAN connections to ensure uninterrupted connectivity and keep your business operations running smoothly.

Network Bonding, Failover

Bonds multiple networks together, including Multi-WAN capabilities, to create higher bandwidth. It seamlessly switches between connections within milliseconds for low latency and safe operation.



Use Cases



Smart Lamp Pole



Traffic Light,
Outdoor surveillance



Smart ports Crane
control, monitoring,
outdoor AGV



Maritime boat
management

XATELLITE MAX SPECIFICATION



Xatellite	Series	MAX	
	Edition	MAX5G2	MAX5G1
Summary	Mobile	5G + 5G	5G
	Wi-Fi	Wi-Fi 6	Wi-Fi 6
	RJ45 Ethernet Ports (LAN + WAN)	8	8
	Bandwidth bounding & redundancy	5G + 5G + fixed line	5G + fixed line
Hardware	CPU	64-bit Quad-Core ARMv8	
	NPU	Twelve-Threaded network processing unit	
	Form Factor	Aluminium Alloy Case	
	Mounting Option	75 x 75 mm VESA mount	
Cellular Network	Communication Standard	3GPP Release 16 NSA/SA, operation sub-6 Ghz	
	Application Network	5G NR SA, 5G NR NSA, LTE-FDD, LTE-TDD, WCDMA	
	5G NR Transmission Rate	5G SA Sub-6: - Downstream 2.4Gbps - Upstream 900 Mbps 5G NSA Sub-6: - Downstream 3.4 Gbps - Upstream 550 Mbps	
	4G LTE Transmission Rate	CAT-19 Downstream 1.0 Gbps CAT-18 Upstream 200 Mbps	
	Network Frequency Band: 5G: Frequency Locking available	N1/N2/N3/N5/N7/N8/N12/N13/N14/N18/N20/N25/N26/N28/N29/N30/N38/N40/N41/N48/N66/N70/N71/N75/N76/N77/N78/N79	
	Network Frequency Band: 4G: Frequency Locking available	B1/B2/B3/B4/B5/B7/B8/B12/B13/B14/B17/B18/B19/B20/B25/B26/B28/B29/B30/B32/B34/B38/B39/B40/B41/B42/B43/B46/B48/B66/B71	
	Antenna Connectors (SMA)	8 x 5G antennas	4 x 5G antennas
Wi-Fi	Wi-Fi Standard:	Wi-Fi 6; 802.11 a/b/g/n/ac/ax	
	Operating Frequency	2412MHz ~ 2462MHz 5180MHz ~ 5825MHz	
	Transmission Rate	2x2 MU-MIMO WiFi 2.4GHz radio Up to 574Mbps physical data rate 2x2 MU-MIMO WiFi 5GHz radio Up to 1210Mbps physical data rate	
	Modulation Technology	802.11 b: DSSS (DBPSK, DQPSK, CCK) 802.11 a/g/n: OFDM (BPSK, QPSK, 16-QAM, 64-QAM) 802.11 ac: OFDM (BPSK, QPSK, 16-QAM, 64-QAM, 256-QAM) 802.11 ax: OFDM (BPSK, QPSK, 16-QAM, 64-QAM, 256-QAM, 1024-QAM)	
	Antenna Connectors	2 x Dual bands Wi-Fi antennas (SMA)	
	Wi-Fi Connections	Max 512 x Wi-Fi connections (concurrently)	

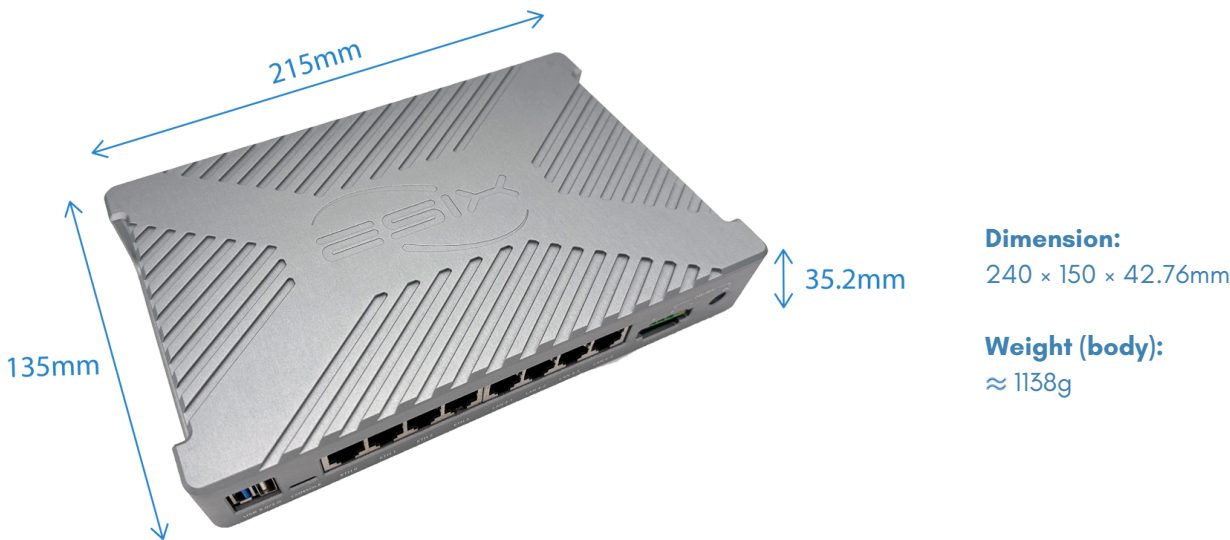
XATELLITE MAX SERIES SPECIFICATION



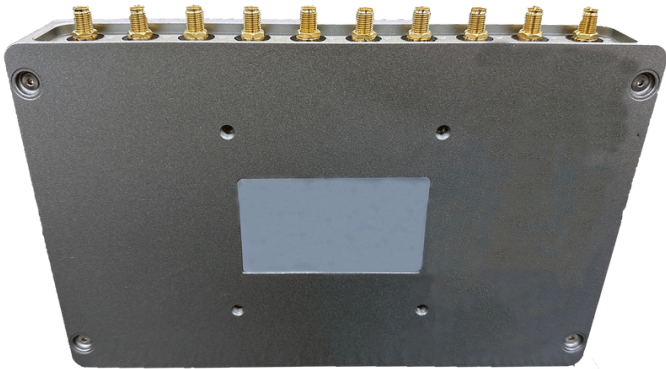
Xatellite	Series	MAX	
	Edition	MAX5G2	MAX5G1
I/O	LAN/WAN Ports	8 × GE RJ45 Ethernet Ports	
	SD Storage	1 × Micro SD Slot	
	SIM Options	2 × Dual Micro SIM Trays, 4 × SIM cards Max(Double SIM, Double Pass / *Dual SIM, Single Pass, Single Standby / *Quad SIM, Double Pass, Double Standby)	1 × Dual Micro SIM Trays, 2 × SIM cards Max(Dual SIM, Single Pass, Single Standby)
	USB Ports	1 × USB 2.0, 1 × USB 3.0 (ModBus, RS232/TTY)	
	Reset	1 × Reset / Factory Restore Button	
Operation Environment	Temperature	-30°C ~ 75°C; -40°C ~ 85°C (Extended)	
	Humidity	5% ~ 95% non-condensing	
	Ingress Protection Rating	IP41	
Storage Environment	Temperature	-40°C ~ 85°C	
Power	Input	(1) Standard DC-044A 5.5×2.1mm Jack input 24 ~ 56V DC (2) 3-pin industrial phoenix power plug 24 ~ 56V DC Available adaptors - 48V/144W adaptor, 138W PoE+ output (default) - 48V/300W, IP65 adaptor, 240W PoE+ output (optional)	
	Consumption	8.5W: WiFi6 Off, 5G modules On (no data flow), No PoE output 16.5 W: WiFi6 On, 5G modules On (iperf3 via WiFi6 & 5G Modem), No PoE output	
	Output (Max)	240W: 8 × PoE+ ports (Integrated GUI managable included)	
Functions	Network Features	Support RIPv1, RIPv2, RIPng, OSPFv2, OSPFv3, BGP-4, BGP-4+, Policy-based Routing, NAT, PAT, BFD, MPLS, Multi-WAN, IPv6/IPv4 dual stack, SRv6, 802.1Q VLAN, VxLAN, STP, RSTP, MSTP, QinQ over IP, MQTT Broker, etc.	
	Security	Support SIM PIN protection, Firewall, Mac address access control, IP address access control, MACsec, Wi-Fi Encryption authentication	
	VPN	Support IPsec VPN, DMVPN, GRE, WireGuard, EVPN-VXLAN, IPfiber(L2 overlay)	
	GNSS	Support GPS, Beidou, Galileo(Optional)	
	Administrator Maintenance	Support SSH, WebUI, SDM (Remote WebUI/Console access)	
	Cloud Central Management	Yes	

XATELLITE MAX SERIES SPECIFICATION

Xatellite	Series	MAX	
	Edition	MAX5G2	MAX5G1
Performance	Router Throughput (Max)	6 Gbps	
	IPSec Throughput (Max)	AES128-SHA1: 540 Mbps AES256-SHA256: 500 Mbps	
	IPfiber Throughput (Max)	Standard Encryption (AES128-GCM-SHA256): 680Mbps Enhanced Encryption (AES256-GCM-SHA384): 500Mbps	
	MACsec Throughput (Max)	GCM-AES-128: 915 Mbps GCM-AES-256: 880 Mbps	
	*Note: Router/IPsec/MACsec/IPfiber Throughput is based on MTU 1500 bytes. Actual performance can vary across different networking environments. Figures apply to the latest hardware revision. The throughput result is tested with DHCP/Static IP.		



There might be colour aberration between picture and each existence



Suitable for 75 × 75 mm VESA mount kit

ORDERING INFORMATION

SKU	Packing List
X7210-55-P12-144W (Reference: Xatellite MAX5G2)	<ul style="list-style-type: none"> - Xatellite MAX router body - Dual 5G Modules inside - SMA Wi-Fi Antenna (EA-S-W) × 2 - SMA 5G/4G/GNSS Antenna (EA-S-5) × 8 - AC/DC Adapter, 48V DC/Max 144W - DC Jack (EP-D-144D) × 1
X7210-50-P12-144W (Reference: Xatellite MAX5G1)	<ul style="list-style-type: none"> - Xatellite MAX router body - Single 5G Module inside - SMA Wi-Fi Antenna (EA-S-W) × 2 - SMA 5G/4G/GNSS Antenna (EA-S-5) × 4 - AC/DC Adapter, 48V DC/Max 144W - DC Jack (EP-D-144D) × 1
Accessories	
EP-I-300P	AC/DC Adapter (IP65) , 48V DC/Max 300W for Full POE+ Output - Phoenix block
EP-D-144P	AC/DC Adapter, 48V DC/Max 144W - Phoenix block
EP-D-144D	AC/DC Adapter, 48V DC/Max 144W - DC Jack
EA-5M-2	External Waterproof 5G Mushroom Antenna (2 meters)
EA-5M-3	External Waterproof 5G Mushroom Antenna (3 meters)
EA-S-W	SMA Wi-Fi Antenna
EA-S-5	SMA 5G/4G/GNSS Antenna
EI-V75	VESA 75 × 75 mm Mount Kit
EO-UTT	USB to TTL (Xatellite console cable)
EW-M12-S	M12-SFP Waterproof Connector
EW-M12-R	M12-RJ45 Waterproof Cord for Ethernet Connection (1 meter)

*Any special requirements, please contact to sales representative.

ESIX STANDARD WARRANTY POLICY



STANDARD HARDWARE/SOFTWARE WARRANTY POLICY

eSIX warrants solely to the original end-user purchaser ("Purchaser") that hardware ("Hardware") purchased from eSIX or our Authorized Partners will be free from defects in materials and workmanship when used within the limits set forth in the documentation (data sheet and user manual) for a period of twelve (12) months, starting from the time of shipment of the Hardware, or the date the Hardware was purchased according to sales registration, whichever is later. (If a 36-month warranty is required, please contact the sales representative.)

This limited warranty is non-transferable and extends only to the original end-user purchaser who acquired the Hardware from an Authorized Partner who has the right to sell in the end-user's territory. eSIX explicitly disclaims any warranty obligations for Hardware that is sold outside of the assigned territory of an Authorized Partner. Your exclusive remedy and eSIX' entire liability under this limited warranty will be for eSIX, at its option, to (a) repair the Hardware with new or refurbished parts, or (b) replace the Hardware with a reasonably available equivalent new or refurbished eSIX Hardware. Any repaired or replacement Hardware will be warranted for the remainder of the original Warranty Period or thirty (30) days, whichever is longer. All Hardware and parts that are replaced become the property of eSIX.

EXCLUSION AND LIMITATIONS

This limited warranty does not apply if: (a) the Hardware assembly seal has been removed or damaged, (b) the Hardware has been altered or modified, except by eSIX, (c) the Hardware damage was caused by use with non eSIX Hardware, (d) the Hardware has not been installed, operated, repaired, or maintained in accordance with instructions supplied by eSIX, (e) the Hardware has been subjected to abnormal physical or electrical stress, abuse, misuse, negligence, or accident, (f) the serial number on the Hardware has been altered, defaced, or removed, (g) the Hardware damage was caused by lightning, power surges or wrong voltage usage, or (h) the Hardware is supplied or licensed for beta, evaluation, promotional, testing or demonstration purposes for which eSIX does not charge a purchase price or fee.

ALL SOFTWARE PROVIDED BY ESIX ("SOFTWARE") WITH OR WITHOUT THE HARDWARE, WHETHER FACTORY LOADED ON THE HARDWARE, CONTAINED ON MEDIA ACCOMPANYING THE HARDWARE OR DOWNLOADED FROM OUR WEBSITE, IS PROVIDED "AS IS" WITHOUT WARRANTY OF ANY KIND.

Without limiting the foregoing, eSIX does not warrant that the operation of the Hardware or Software will be uninterrupted or error free. Also, due to the continual development of new techniques for intruding upon and attacking networks, eSIX does not warrant that the Hardware, Software or any equipment, system or network on which the Hardware or Software is used will be free of vulnerability to intrusion or attack. The Hardware and Software may include or be bundled with third party software or service offerings. This limited warranty shall not apply to such third party software or service offerings. This limited warranty does not guarantee any continued availability of a third party's service for which this Hardware's or Software's use or operation may require.